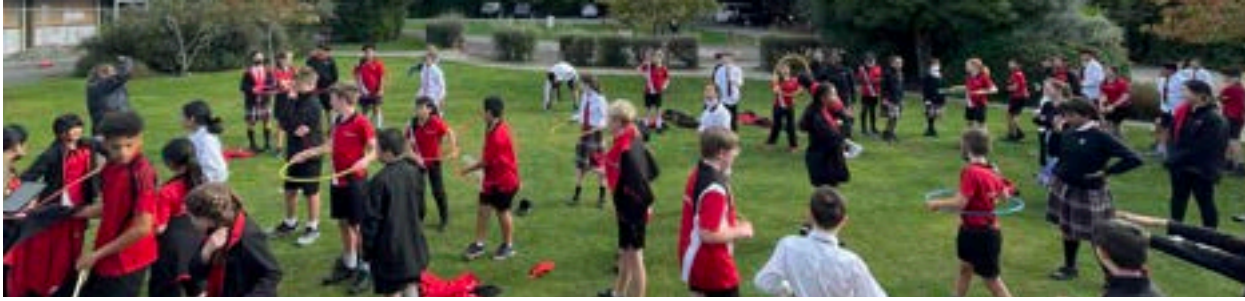




TERM 2 | WEEK 3



Kia ora koutou Aidanfield whanau.

From where I sit it has been a great start to the term. We have seen pupils busy with winter sport activities starting, cross countries to run and their Amazing Race Day hosted by our wonderful parent association. We are blessed to have such a dedicated and motivated group of parents

feeding into who we are as a community. Thank you to those that put it together.

COVID Reminders

So far Covid has kept a very minimal presence in the school with those isolating no higher than 8% away throughout the school at any one time (covid positive or household contacts) since the beginning of the term. Please remember to keep your child at home if they show any signs of illness (even a sore throat counts!). If they simply have a cold they will test negative and can come back as soon as they are better. If they have COVID then you support the rest of the community by staying at home as required. It is really important you continue to inform us through either the School App COVID button or texting 027 425 0138.

We continue to ventilate the classrooms even with the days getting cooler so please bear in mind that you may need to invest in a winter shell jacket from the uniform selection if you haven't already. New middle school merino jerseys/cardies have been sourced through Mainland and there is more information over the page and to come via email. We also encourage our children to wear a tee shirt or a polyprop top under their shirt if they feel the cold. There are lots of ways to stay warm, still be in uniform and that do not cost a lot.

Enrolments 2023

Enrolment season is now upon us. It's always a busy time as we have more and more interest in our school and families seeking to be a part of ACS. We are blessed to have been given a roll increase which means we can now manage our roll up to 425 pupils. We will apply this extra capacity over the coming couple of years and as new classrooms come on stream. Because of this, there may be places available in some of our primary years in 2023. There will be places available in our Year 7 to 10 classes.

Application information can be found on our website at <https://www.aidanfield.school.nz/domestic-enrolments/> or you can pick up a form from the office during school hours.

Enrolment Deadlines

Unlike state schools, we have an enrolment season with deadlines.

The first deadline this year is for our **Years 7 – 10** enrolments, **Friday 17 June**. If your child is already at ACS in Year 6 you do not need to apply for Year 7, they will automatically move through to Year 7.

The next date to keep in mind is **19 August**, this is the deadline for our **New Entrant – Year 6** intake. If your child is turning 5 in 2023 this is now your enrolment season. If you know of someone that is hoping to apply a child to start next year, please pass this information on to them.

Of course, we welcome and encourage enrolments from now to the deadline and encourage you to get it in earlier rather than later. Late applications will not be considered so being mindful of the deadline dates is very important.

I hear the question 'will I get an interview?' if you apply for another child. Many (but not all) existing families will not need an interview. However, some will and you will be contacted if this is the case. There are clear guidelines for the assessment of each application and the interview process helps to ensure these are followed with integrity.

Getting Answers

Can I please remind you that the best place to seek answers to school-related questions is with the people that know the answers or the processes. If your question is in regard to enrolments, you can email enrol@aidanfield.school.nz or give the office staff a call during school hours. The only people who know the answers to enrolment based questions are located in the school office. This is relevant to a range of questions that pop up on the Facebook chat from time to time. Queries about classroom practice or requirements are best sent to the teacher directly. Questions about sport are best sent to the Head of Sport or sports@aidanfield.school.nz. Sometimes checking inboxes for school notices or letters is helpful as well, most questions are often already answered in those.

Teacher Only Day

Our last one was an excellent opportunity for our staff to engage with the new history curriculum. Our next one is June 3, the Friday before Queens Birthday. The school will be closed on this day.

Grace and peace
Mark Richardson
Tumuaki/Principal
Ext 202

Growing in Wisdom and Stature | Stand and be Confident

www.aidanfield.school.nz | office@aidanfield.school.nz | 03 338 8153 | 2 Nash Road Aidanfield

Relief Support Workers Needed

We have an amazing team of support workers that work with students throughout the school. We invite applications for relief support workers to join this team. If this is something that interests you, please contact Kaye Lawn for more information kaye.lawn@aidanfield.school.nz.

Resupply of our School MERINO Cardigans and Jerseys

Mainland Uniforms has been working hard to secure a supply of merino cardigans and jerseys for our Middle School uniform. They have worked with the previous supplier to ensure the merino grade is better and have redesigned the sleeves to reinforce the fabric for general wear and tear. We are taking pre-orders for the first shipment and an email will go out next week to begin this process. Samples will be available at the office for you to try on and feel the fabric.

Mainland is prepared to completely back this product and we hope to have a three week turn around once the order is sent to them. Payment will still be through Mainland Uniform and we will discuss the pick up process closer to the time.

Primary students are encouraged to wear the knit options available at Mainland along with the shell jacket for extra warmth.



Parent Teacher Mid-Year Interviews - Thursday June 30th & Tuesday 5 July

Within the next few weeks, you will be sent an email to book your time to meet with your child's teacher for mid-year interviews. Primary school interviews are with their class teacher and middle school parents have the option to meet a variety of teachers according to subjects/classes. This date has not previously been published so please save the date and look out for the email.

Invitation to be a Homestay Host for International Students

We have the possibility of International Students arriving for Term 3 2022 and are seeking homestay hosts. There will be stringent protocols upon their arrival. These students will be from Visa Waiver countries like Japan, South Korea or Germany. They will not have to isolate themselves upon arrival.

Conditions of Arrival:

- They will need to have a negative Covid test prior to departure
- Be double vaccinated
- Will be given a RAT test upon arrival
- They will be 10 years and over

The Homestay fees are from \$35.00 dollars per night for a minimum of 7 days, 7 nights. The students will be here for a maximum of 11 weeks but this may vary from student to student. Because the Homestay program has been dormant for so long, all the relevant paperwork will need to be redone, including Police Vetting and visits.

If this is something you would like to enquire further about or you would like to be a homestay host, please email Rachael Bainton at homestay@aidanfield.school.nz.



Parent Association Fundraiser - Laser Strike

\$25 per ticket (\$10 from each ticket will go to the Parents Association)

Fun for the whole family (Ages 5+). Each ticket will get you half a pizza and 2 games of laser strike. Parents can buy tickets for themselves to play if they want to. Due to capacity limits in the building parents are able to stay with the younger students. If we sell up to our maximum of 80 tickets some older children may need to be dropped off (we will announce this closer to the time though and make sure there is enough supervision there)

Tuesday 24th May at 6pm, Level 2 Harvey Norman Centre, 250 Moorhouse Avenue. Book on Eventbrite to order your tickets and then if you could make payment into the PAACS

account by 22 May 03-0855-0422911-000, make sure to reference your name. <https://www.eventbrite.co.nz/e/337865052467>. If you have any questions or cannot order tickets through Eventbrite please email us how many tickets you would like at aidanfieldparents@gmail.com.

TEACHER ONLY DAY
SCHOOL CLOSED
Friday 3 June

SHARP will have a one-day programme during the West Spreydon, Hoon Hay, and Aidanfield Teacher Only Day on Friday, 3rd June 2022. If you're keen to enrol your kids, you can book them in by heading to our website www.sharp.org.nz, logging in and selecting 'book activity'. You can also simply click this link below:

https://enrolmy.com/sharptrust/activity/107-Teacher_Only_Day_3rd_June_2022

Term Dates 2022

Term Two (10 Weeks) *Mon 2 May – Fri 8 Jul*

3 June	Teacher Only Day (School Closed)
6 June	Queen's Birthday Weekend (School Closed)
23 June	Matariki School Event
24 June	Matariki Observed (School Closed)
30 June - 5 July	Mid Year Interviews
1 - 3 July	40 Hour Famine
9 July – 24 July	School Holidays

Term Three (10 Weeks) *Mon 25 Jul – Fri 30 Sept*

1 Oct – 16 Oct	School Holidays
----------------	-----------------

Term Four (9 Weeks) *Mon 17 Oct – Wed 14 Dec*

24 October	Labour Day (School Closed)
11 November	Canterbury Anniversary (School Closed)
14 December	Last Day of School



Join us for our 2nd annual Matariki event to celebrate the Māori New Year, this year being the first year where there is an official NZ public holiday (on June 24th) Thursday June 23rd from 5.30-7pm in our school hall. Both our senior and junior kapa haka groups will be performing. It will be an evening of fun Matariki themed activities, performances, food and gathering as a school community. If anyone in the parent community would like to join the Māori whānau group in organising this event, please contact me at joelle.nareki@aidanfield.school.nz.

40 Hour Famine 1 - 3 July 2022

Last year, we raised a record amount for World Vision through the 40 Hour Famine, and this year we want to do even better. On average, each person in New Zealand, uses over 200L of clean, treated water a day for drinking, washing, cleaning and cooking (it uses more than 10L for each flush of the toilet!). Children in Malawi use only 5L of water per day and much of it is not clean! **Join us to make a difference in the lives of children who do not have access to clean water.**

Year 5-10, as a bonus, you can also use the famine towards your service hours or passion project for the Ahu or Rui Challenge!

Signing Up... If you want to do online funding, go to: <https://my.worldvision.org.nz/ss/9JTqPN/aidanfield-christian-school> and click on 'join this team'.

Here's some of the "**Torment the Teachers**" incentives- lets get behind our students this year so they can be rewarded well!!!!

2023 Notice of Increase to Attendance Dues

Attendance dues are used by the Proprietor of the school (The Christian Schools' Trust) to provide the land and buildings that make up the campus of Aidanfield Christian School. Insurance premiums have increased considerably in 2022 along with increasing interest rates for debt servicing. Alongside these increases, building costs for current and planned projects at the school continue to climb. This means that the attendance due rate must be increased in 2023 in order for the Proprietor to continue to meet its obligations.

Attendance dues have been set at \$1,440 per student for the year. This includes a small increase of \$20 (or 1.4%) above the 2022 rate. The discount structure for families with more than one student at the school will continue to operate. The proprietor is mindful that attendance dues represent a significant commitment for families and endeavours to strike a balance between keeping them affordable for families on the one hand, and being able to provide what the school requires on the other.

Kind regards, Keith Spragg, Business Manager, Christian Schools Trust

House Points Tally



Marangai
53200



Pōtonga
49400



Tuāraki
48150



Hauāuru
44950

Cross Country



Raise:

\$3000 - Chubby Bunny Competition for house points / Orange Office Staff Day

\$4000 - Ambassadors/teachers eat spicy noodles

\$7000-13000 Teacher beep test - Teacher dress ups or clothes swap - staff vs teachers basketball - Teachers tap dance show - Teachers icebucket challenge - crazy hair dos

\$15000 Mr Richardson wearing a clown suit for the day

Canterbury Secondary Schools Swimming Sports

Year 9 **Alyssa H** came **3rd** in the girls aged 12-13 years **100 meter freestyle**.

Year 9 **Samuel B** came **7th** in the boys aged 12-13 years **50 meter freestyle**.

These are great results as they are swimming with the highest level of competition in Canterbury.



Tuning in to Kids

Emotionally Intelligent Parenting

A six-session programme for parents/caregivers of children aged 5-12 years

Tuning in to Kids is an evidence-based programme designed to teach parents & caregivers:

- Awareness and regulation of their own emotions;
- Awareness of their children's emotions;
- To use children's emotional experiences as an opportunity for closeness and teaching;
- Skills in assisting children to verbally label and manage their emotions;
- Skills in assisting children to problem solve;
- To guide children's behaviour with appropriate limits.

Sessions include:

- Watching video material
- Group discussions and exercises
- Role plays
- Home activities to practice different ways of responding to your child's emotions
- Participants sharing their own experiences within the group



If you are interested in attending a Tuning in to Kids course, please email: manaakefeedback@cdhb.health.nz. You will be emailed with the details of new courses as they are released.

DRUM lessons 2022



drum tuition

Graham Thomson

email grayim@hotmail.com

mobile 021 365 313

Sydenham Rugby are still taking registrations for junior rugby if your son or daughter would like to play. Contact 03 332 8875 for information

www.sydenhamrugby.co.nz



The Christian Schools' Trust – CEO Announcement

Mark Larson (left in photo) has resigned from his role as CEO of The Christian Schools' Trust (CST) and the Trust has appointed Chris Hannen (right in photo) to serve as the new CEO. The Proprietor, along with the schools and preschools we serve, thank Mark for his faithful and diligent service and welcome Chris to his new role.

Mark plans to continue his work as CEO of the Association of Integrated Schools Aotearoa NZ (<https://www.aisnz.org.nz/>) and leading the Wellington Christian Education Project (<https://wcep.nz/>) along with ongoing involvement in other national and local educational initiatives and governance. Mark was Principal of Middleton Grange School from 1999 to 2010, then CEO of The Christian Schools' Trust from 2010 through to April 2022. For over 20 years we have been privileged to benefit from Mark's vision for Christian Education, his humility, leadership and wisdom. Mark will be missed and we thank him for his faithful and effective service to Christian Education at Middleton Grange and CST, across Christchurch and throughout the nation.



Chris Hannen brings to the CEO role a deep commitment to Christ and Christian Education along with relevant work experience and skills. He is a Chartered Accountant, working for 15 years in both Christchurch and London in accounting, audit, construction, importing and financial services. Over the past 12 years, Chris has served at World Vision New Zealand and then Laidlaw College in various general management roles. He also studied at Laidlaw College graduating with a Bachelor of Ministries and, latterly, a Master of Theology. Chris is married to Belinda and they have three children, all of whom were/are students at Middleton Grange School. Chris and Belinda are members of Life Church (La Vida) and lead a home group together. Chris was a church trustee for over 20 years and has served in other voluntary governance roles in Christchurch, including tertiary chaplaincy.

The Christian Schools' Trust was set up in 1963 to establish and maintain Christian schools to provide a first rate general education and instruction in the Christian faith to children of Christian parents. Our vision is to partner with others in growing Christian education to the glory of God. CST schools are Christian, non-denominational and evangelical in character. Our schools and preschools integrate biblical teaching with quality education within a caring community that seeks to be Christ-like and honour God. CST schools take seriously their role to act under a delegated authority of parents, honouring the biblical principle that parents are primarily responsible for the education of their children. CST operates the Cornerstone Christian Early Learning Centres and is Proprietor for four State integrated schools; Aidanfield Christian School, Ashburton Christian School, Middleton Grange School and Rolleston Christian School.